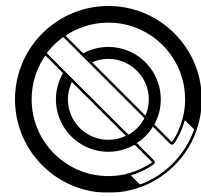


# Anomalous Entity Report

## "The Gnawing Swarm"



Subject - 0222<sup>1</sup>

<sup>1</sup>Department for Classification of Non-typical Phenomena

2681 Words

Document ID:10667108610

**Memorandum:** To the bone



Containment Class: Daemon



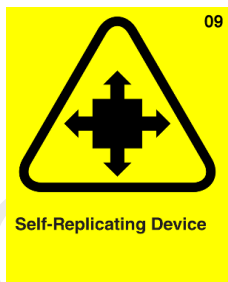
Recontainment Class: Extensive



Ethical Class: Magnolia



Market Class: Opulent



Self-Replicating Device



Group Intellect



Hive-Mind Organisms



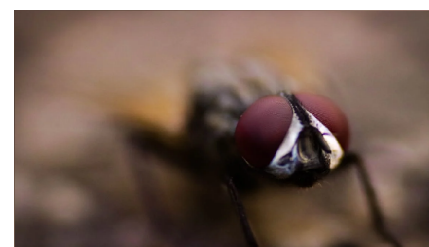
Existential Threat

Under Review

## 1 Specification

"A black morphing maw that devours anything meaty."

This was the last auditory announcement made by a Category-C to another when seeing S-0222 for the first time, before their imminent deaths. S-0222 is a cloud of fruit flies that will devour anything made of meat that it can get its hands on. The flies move together as a large continuous swarm, thick enough to block light. This



**Fig. 1.** A picture of a fly mid transformation into becoming part of S-0222.

results in S-0222 "looking like a daunting black cloud that you don't want to stick your hand in" as commented by Dr Salarghy. The cloud can morph and move in any way that would be physically possible for a small fly, although the movement, contrary to what we know about flies, is more fluid and piscine than we would expect.

Strangely, these fruit flies devour meat. These flies have identical appearances to fruit flies but their behaviour differs completely. It is safe to assume that these flies came to be after the Genesis Event, so it is appropriate to assign an anomalous designation, rather than consider them as standard fruit flies. On top of the behavioural differences, anatomical differences were additionally discovered by a resident entomologist contracted by the Corporation to research S-0222. She discovered that these flies do not have proboscises but rather a circular mouth lined with small sharp 'teeth' akin to a lamprey. These mutated flies came to known as S-0222-A.

Alongside the contrasting mechanics of consumption to an ordinary fly, they also have unusual excretions and waste that standard fruit flies do not produce at all. This excretion was originally thought to be useless until tests revealed it had amazing potential to fix nerve damage. This has allowed the Corporation to patent it as "Flipo" and sell it as a medicine for many neurological disorders.

## 2 Containment Procedures

Regarding the containment of S-0222, a standard containment cell was deemed too risky and inconvenient for the collection of Flipo. As such, a type of giant apiary was needed to be constructed to safely and lucratively contain the swarms. Apiaries of this type have been constructed at many different facilities, including both internally and exterior to the facility. The lack of exposure to the outside world has not been deemed a risk to the production of Flipo and so, it is down to the site director's discretion about where one should be constructed. One such example in record is Director Florrin's efforts in building an external one outside of Facility 19. Historically, it was presented as an exhibit for customers on a tour of the Flipo manufacturing facility. To date, it remains a prime example of the variability of S-0222's containment directives.

Human sacrifices are necessary for the harvesting of Flipo. Flipo is collected from specially produced fly hives and are harvested by hand due to its volatile nature. Failure to conduct the safe transfer of Flipo has resulted in a higher number of human deaths than were necessary.

Volunteers for this job are sparse as it requires permanent incarceration within the apiary, so Category-C personnel are predominantly used in lieu. Category-C personnel are infrequently imprisoned in large quantities within the apiary to avoid unnecessary escape opportunities for S-0222. They are not allowed to leave until they die.

These personnel wear specialist chainmail hive suits to avoid unnecessary death. They collect Flipo from the fly hives and deposit it within a receptacle for further processing. From this receptacle, they can also collect their rations to sustain them during their internal tenure of Flipo harvesting.

Unfortunately, due to the nature of their work environment, stripped human bones and old suits tend to collect on the floor within the apiary which is both a distraction and obstacle for other personnel inside. When new people are introduced to the hive, we use this as an opportunity to remove any unwanted debris.

### 3 Recontainment Procedures

Previous recontainment methods have been revised by Dr Salarghy. Please refer to the new instructions below:

S-0222 only poses a threat when outside its contained apiary. Despite its destructive nature, S-0222 can only consume a limited number of humans within a given timeframe, so a breach of containment, while serious, is not considered a global threat.

Sonic weaponry has proven itself an effective tool for disrupting hivemind communication within the swarm. When exposed to low-frequency sonic blasts a cloud of flies becomes subdued and docile. At this point, they can be gathered with something as rudimentary as a vacuum and placed back inside their containment.

### 4 Behaviour

**Behavioural Synopsis:** These flies don't act independently - they are a hivemind. A queen fly, S-0222-B, at the centre of the swarm appears to have autonomy over the rest of the flies around her. The queen herself is larger and has more profound colours, but nothing considerably supernatural; appearance-wise at least. The queen uses different frequencies of vibrations with her wings which can transmit orders to the rest of the swarm, but it appears only queens have this capability.

The queen is also capable of expelling pheromones which attract ordinary flies of all kinds. These flies are all welcomed within the swarm and then undergo a metamorphic process. It is unknown whether the queen's pheromones or wing vibrations catalyse this change. The new fly will undergo a vast change of appearance and anatomy to make it homogeneous with the rest of the swarm.

At the time of writing this, the Corporation currently contains multiple queens that have garnered a large swarm of flies around them. These instances of S-0222 are stored at multiple facilities to stop them from combining. While the presence of other queens is likely, none have gathered a swarm noteworthy enough to warrant containment.

### **Analysis of their hivemind communication by Dr Roswell:**

At first, it appeared that their sole form of communication was their wings, but I have since discovered that their excretion of Flipo plays an important role. Flipo, known for its ability to mend neurological disorders, is frequently secreted after they consume food. I have come to believe that Flipo is a waste product retaining a latent potential. The true source of this neurological panacea comes from the queen and her pheromone glands. These pheromones not only attract more flies but also amplify the queen's ability to control the nervous systems of these insects with her wing vibrations.

The pheromone glands, despite having a more potent form of Flipo within cannot be harvested effectively. Under closer inspection, these pheromones also paint a clearer picture of how these flies undergo spontaneous metamorphosis when invited to the swarm and I believe that this ability is also inherited in excretion that is Flipo.

Under the guidance of Dr Salarghy, enough evidence has been provided to suggest that this discovery is not a necessary threat or risk to patients who have been administered Flipo, due to the extensive clinical trials carried out by the Corporation.

The question that plagued me next in my study of their hivemind was where the queen gets her intelligence from. Flies aren't sentient, yet my research suggests that that may not be the case for our impressive little queens. These queens show a higher level of intelligence than most animals and are on par with some humans. Not only are they capable of managing risks, threats and their survival, but they are also capable of higher levels of critical thinking and rational decision-making.

This assessment of the queen's behaviour was aided by an AI method, CC-0222, to translate their wing vibrations into comprehensive speech. With this aid, queens could solve complex logical problems, and worryingly express their desire for world domination. Dr Salarghy has assured us that there is no attainable method for the flies to achieve this, so it is likely an empty threat from the queens.

One interesting discovery in the communication with queens was that the queens themselves might be part of a larger hivemind. Whether it's an error in translation or reality,

multiple queens that this has been tested on often refer to themselves as a single individual being, as if a larger hive nexus is controlling all the queens. This is speculation at this point as the Corporation hasn't found any physical evidence to suggest the existence of a super-queen and also further research and questioning of the queens were concluded under the supervision of Dr Salarghy to avoid unwanted hysteria caused by the empty threats of queens.

### **Analysis of their metamorphic abilities by Dr Amberlee:**

Dr Roswell's discovery offers an insight into how the queen's pheromones can cause other flies to metamorphose by impacting their nervous system. My research has expanded upon that, and I have discovered that these pheromones have an immense transformative power, unlike anything that has ever been witnessed before. When these pheromones interact with the nervous system of a fly, it sends a command throughout its body ordering a reshuffle of its DNA into the flies that serve the queen. This reshuffle is accompanied by the spontaneous transformation that happens in a matter of minutes. The pheromones need to come into contact with nerve tissue to have this effect.

This isn't the only limitation of this metamorphic ability; queens have used this to transform swarms into what would look like humans. This involves sending pheromones to reshuffle the flies' DNA to make them smooth and skin-like to create the guise of human flesh. This transformation is not perfect though, and at a close look, a reasonable individual will be able to discern if there is a fly imposter among them.

It does also need to be noted that this ability of the queen to add ambient flies to her swarm appears to be limitless, meaning that in perfect conditions the queen could get an ever-expanding horde of flies to command at her whim. It has also been exhibited that two or more queens can combine their swarms to create a larger one which they then pilot together.

## **5 Origination**

The original swarm of S-0222, that was contained, was found in a Second World War bunker in Germany. The bunker was sealed with bones of the prior victims located inside. According to this discovery, these flies were able to sustain themselves in this trapped environment for nearly 200 years before the Corporation opened it.

This original swarm was weaker and smaller than what it has become. Over time this instance of S-0222 has inherited ambient flies due to minor lapses in containment security.



**Fig. 2.** The Bunker in which S-0222 was discovered.

When the bunker was first unsealed, the swarm feasted upon those who had just freed it. The remaining members of the excavation team fled in their heavy-duty vehicles. They noticed that the swarm became more passive and docile around the rumbling engines of their trucks.

With this newfound information, a containment squad was promptly called in for support with the advice that they should bring tools that could replicate the low-frequency resonations of the engines. The swarm in its docile state did not stray far from the original bunker and so, it was able to be fully contained and safely transferred to Facility 71 in Berlin.

Reports of swarm activity originating from the Arctic Circle have also been noted, although there is no substantial evidence to suggest that these swarms are a threat. We assume that they are put into a sort of hibernation state by the freezing environment. This does likely suggest that they originated from the Genesis Event - but why they appeared in Germany is less obvious and more research is required.

Much of the original research on Flipo was conducted in the Berlin facility. The utility of Flipo was discovered after a Category-C with severe cranial-damage-causing neurological issues fell while inside the apiary and licked the excretion that was on the floor. Miraculously this ended up curing her of many of the neurological issues she had. She later became known

as Flipo-1 and has remained under the strict supervision of Dr Salarghy, and Dr Salarghy alone.

## 6 Postscript

### 6.1 Addendum 1

The Nature of Flipo, by Dr Salarghy:

Flipo, as we know it, has revolutionised medicine and our PR. Since its gestation within our labs, Flipo has proven its utility in curing or helping alleviate many neurological diseases' symptoms. Many notable examples include its immaculate treatment of dementia and especially Alzheimer's. Flipo works by regenerating damaged nerve tissue in the brain and the rest of the nervous system. The reaction that occurs is regenerative; however, due to the extraordinary nature of Flipo, the actual chemical logistics behind the reaction are yet to be explained with conventional science.

Flipo underwent intense pre-clinical and clinical trials before being accessible to our most esteemed clients. During this time we ensured that the safety and reliability of Flipo was certain. Sceptics within our research department were quick to note that we could've and should've tested for longer-term side effects. This was unnecessary for two reasons. Firstly, my advanced future prediction research confirmed its safety and, secondly, increased clinical trial length would've resulted in a postponement to the large amount of revenue Flipo has produced.

Many of these sceptics were found to be individuals working against the interests of the Containment Corporation under the guise of client safety. These traitors were tried with corporate sedition and were punished appropriately.

One dose of Flipo (enough to cure most neurological diseases) is approximately 500mg. The average production of a Flipo manufacturing facility is 1 tonne a day. One dose of Flipo, under our current monopoly, can be sold for around 10,000,000 meaning that the average production value of a Flipo manufacturing facility in one day is  $2 \times 10^{13}$ .

This amount of money is unfeasible to report to taxation entities and reintroduce into the economy due to the risk of hyperinflation. As such we, the Corporation, generously lower the retail price so clients can realistically purchase it.

### 6.2 Addendum 2

Incident-0222-1:



This incident was caused by S-0222's ability to disguise itself as a human. Under normal circumstances, our highly professional personnel would be able to distinguish between a Category-C person and S-0222 in its human form. However, this was not the case in one situation. Please note that this was an isolated event and is extremely unlikely to reoccur after the appropriate disciplinary action was taken against the incompetent staff members who allowed this incident to happen.

On April 5th, 2108, S-0222 breached containment at the Berlin facility. The casualties were numerous, and the Emancipation of Berlin was initiated, in which the Corporation freed civilians from their fate of being consumed by S-0222. This process involved placing a large dome over Berlin using Corporation B-1-12 hovercraft to ensure that S-0222 would not spread further into the outside world.

After the Sealing of Berlin, many weapon-grade, low-frequency sound producers were attached to the external sides of the dome. Using these, the Corporation emitted an immense low-frequency resonance throughout the entire sealed city. The resonance was so intense, due to the amplifying nature of the dome's curvature, that every single human living in Berlin was killed. Fortunately, S-0222 was subdued. The dome was then removed, and S-0222 was recontained.

The unfortunate collateral damage was covered up by our sponsored media as a new science experiment designed to safeguard you from government chemtrails. News of the true extent of incident-0222-1 never became public, and economic and social losses were subsidized with the Corporation's relevant technologies to dispel suspicions. Following this, the Corporation initiated the repopulation of Berlin.

## 6.3 Addendum 3

**Failsafe protocol for the destruction of Flipo:**

If, for whatever reason, Flipo and the patients that have been administered it need to be destroyed, please initiate Operation Capped-Rook. For further information, contact your local site engineer and ask about doomsday protocols.

## A Designations

### A.1 S-0222

"The Gnawing Swarm"



## **A.2 S-0222-A**

Mutated flies that merge into a swarm around a queen to create S-0222

## **A.3 S-0222-B**

Queen's of the "The Gnawing Swarm"

## **A.4 Flipo**

Drug manufactured from residue created by S-0222.

## **A.5 Dr Salarghy**

Researcher in charge of the production and study of Flipo.

## **A.6 Dr Roswell**

Researcher in charge of conducting behavioural assessments of S-0222.

## **A.7 Dr Amberlee**

Biochemist responsible for the study of S-0222's pheromones.

## **A.8 The Emancipation of Berlin**

The story proliferate around the population of Berlin in order to abate any negative attitudes around the Corporation.

## **A.9 The Sealing of Berlin**

The quarantine of Berlin via a giant dome in order to prevent the further escape of S-0222.

## **A.10 The Repopulation of Berlin**

Measures taken to ensure minimal economic damage was caused to Berlin follow the eradication of all of its citizens.

## **A.11 Operation Capped-Rook**

Emergency fail afe protocol to end the production and consumption of Flipo.